

# King's Lynn Unparished Area CGR – 1<sup>st</sup> Consultation Results

Charlotte Marriott  
Scarlet Pettit

Borough Council of  
King's Lynn &  
West Norfolk



# Background

January 2026 Full Council resolved to undertake the first consultation required as part of the CGR process - seeking residents' views on whether a parish council should be established.



# Methodology

- Consultation ran from 9<sup>th</sup> February to 27<sup>th</sup> March 2026.
- Submissions were made the following ways:
  - Online and paper survey
  - Email [CGR@West-Norfolk.gov.uk](mailto:CGR@West-Norfolk.gov.uk)
  - Letter to the Corporate Governance Team
- CGR Letter and FAQ document distributed to <20k properties within the unparished area, with the following info:
  - What is this consultation about?
  - What services would the new Parish/Town council provide?
  - How much Council Tax would I pay?
  - Who decides whether or not to create new Parish/Town councils?



# Survey Questions

- Question 1 – Which of the following best describes you?
  - I live in King's Lynn
  - I work in King's Lynn
  - I own a business in King's Lynn
  - Other



# Question 2

- Which of the above is your preferred option?
  - **OPTION 1** – To create a Parish / Town Council
  - **OPTION 2** – Not to create a Parish / Town Council
  - Another option
  - Don't know / not sure



# Question 3

- Would you like King's Lynn to maintain its Mayoral/civic heritage?
  - Yes
  - No
  - Don't know / not sure



# Question 4

- Are you aware of any existing local community governance in the area (for example, community or neighbourhood forums, committees, resident associations etc.) which would serve the local community as an alternative to a Parish / Town Council?
  - Yes
  - No
  - Don't know / not sure

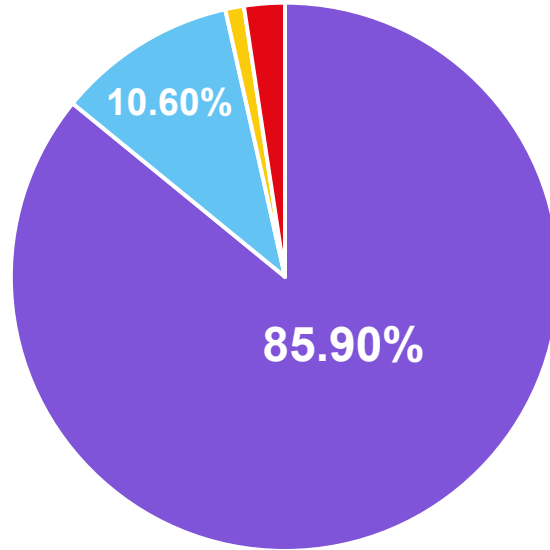


# Participation Statistics

- Total number of submissions: **906**
  - Online survey submissions: 849
  - Paper survey submissions: 47
  - Written submissions: 5
  - Email submissions: 5
- Total number of respondents: **915**  
(taking into account submissions made under joint names)



# Summary Results – Town/Parish Council



■ To create a town/parish council

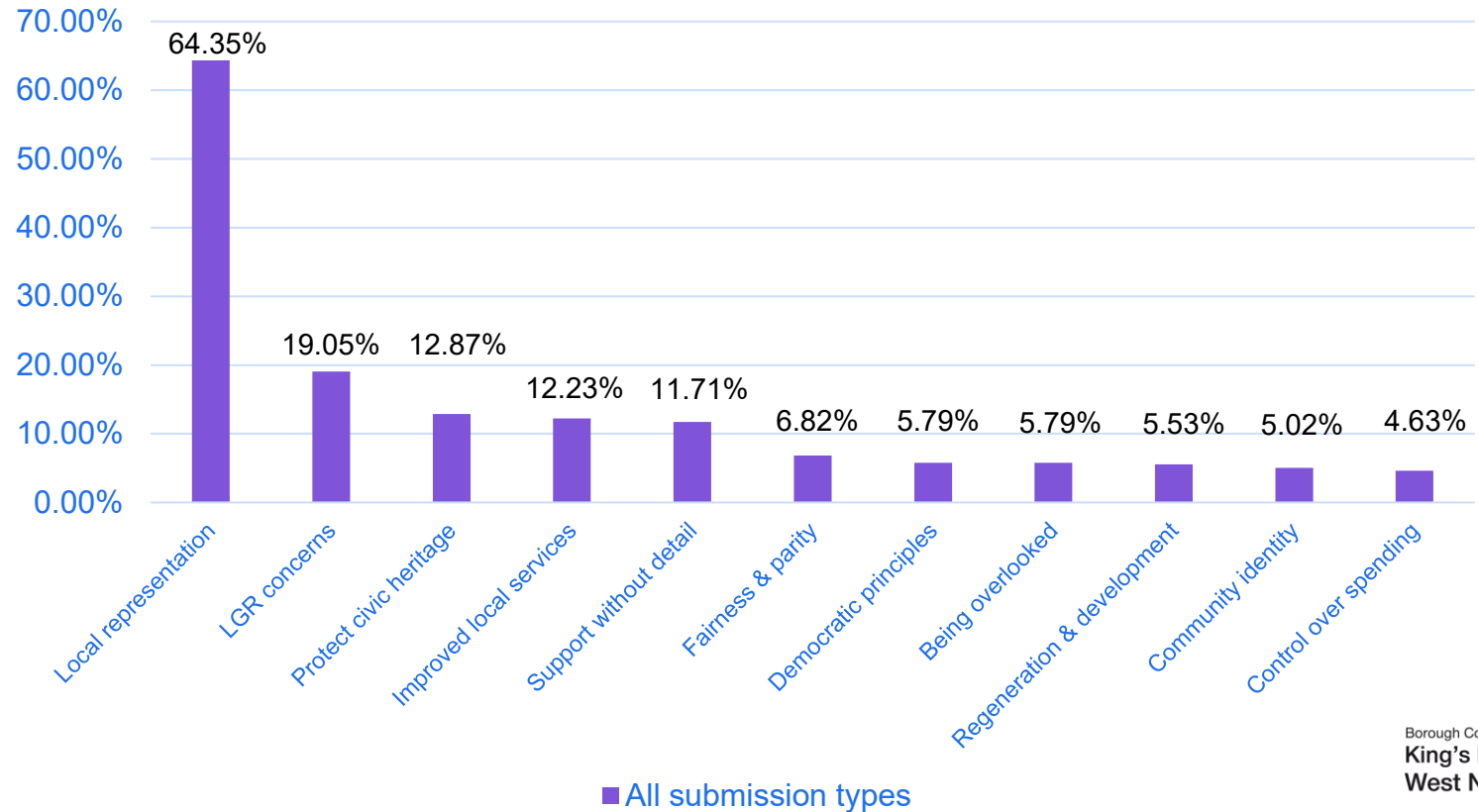
■ Not to create a town/parish council

■ Another option

■ Don't know/not sure



# Most Frequent Reasons – In Favour



# Sentiments

## Local representation & local voice

*'We need decisions made locally'*

*'I've had enough of being governed by Norwich'*

*'Self-evident and long overdue that King's Lynn deserves dedicated and specific representation'*

*'Do not want local issues planned from a distance'*

*'Ensure that local voices are heard and not swept up in aggregate views'*

*'Opinions of everyone who lives in this area matters'*

## LGR concerns

*'Avoid total dictatorship from one unitary authority'*

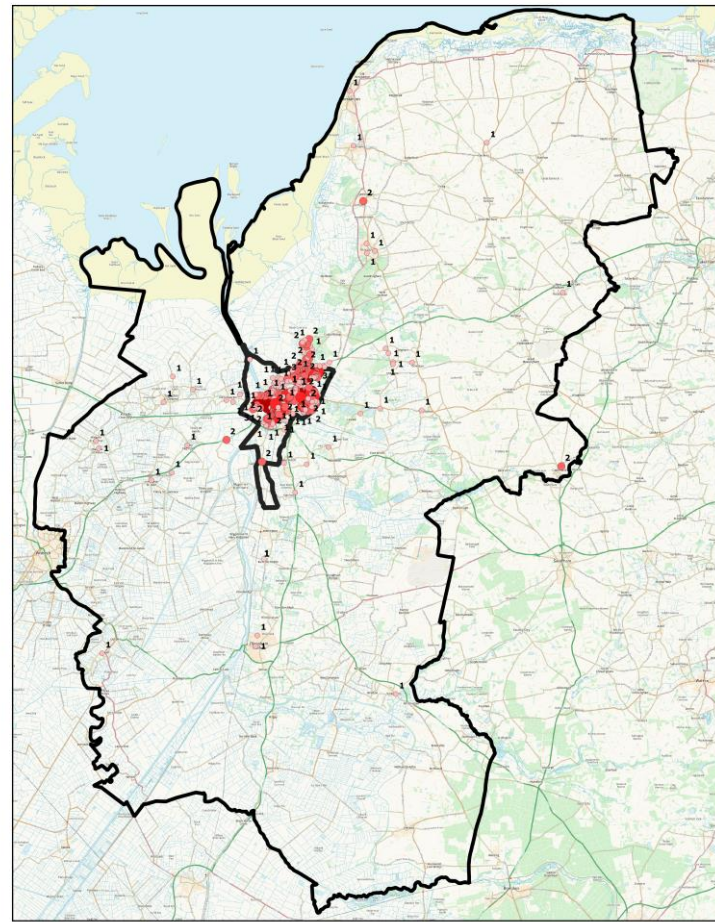
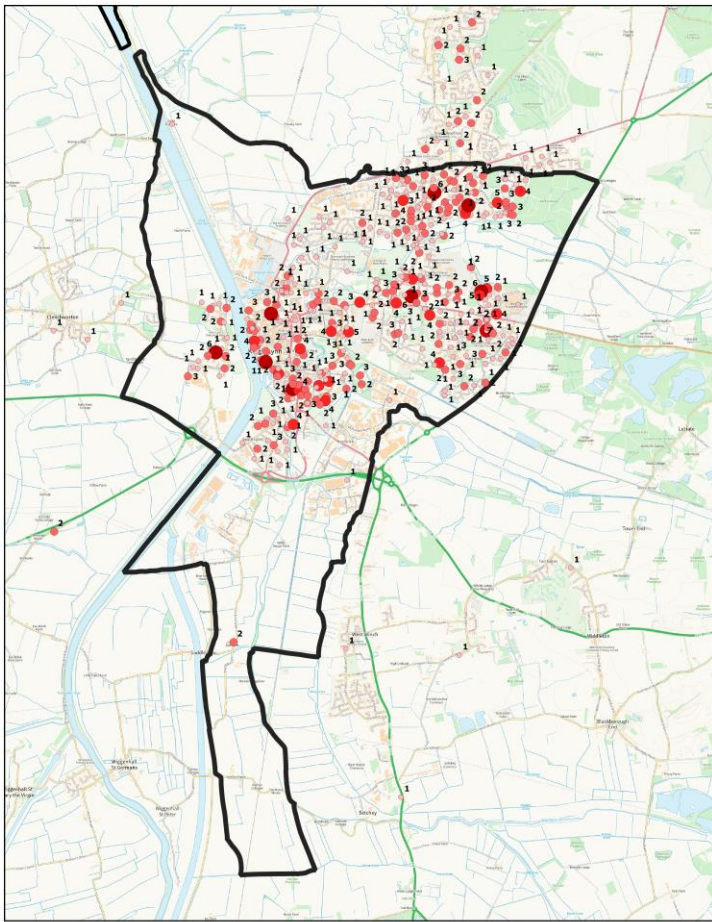
*'Any kind of unitary authority would risk Lynn being sidelined'*

*'Retain as much independence as possible from any future unitary council'*

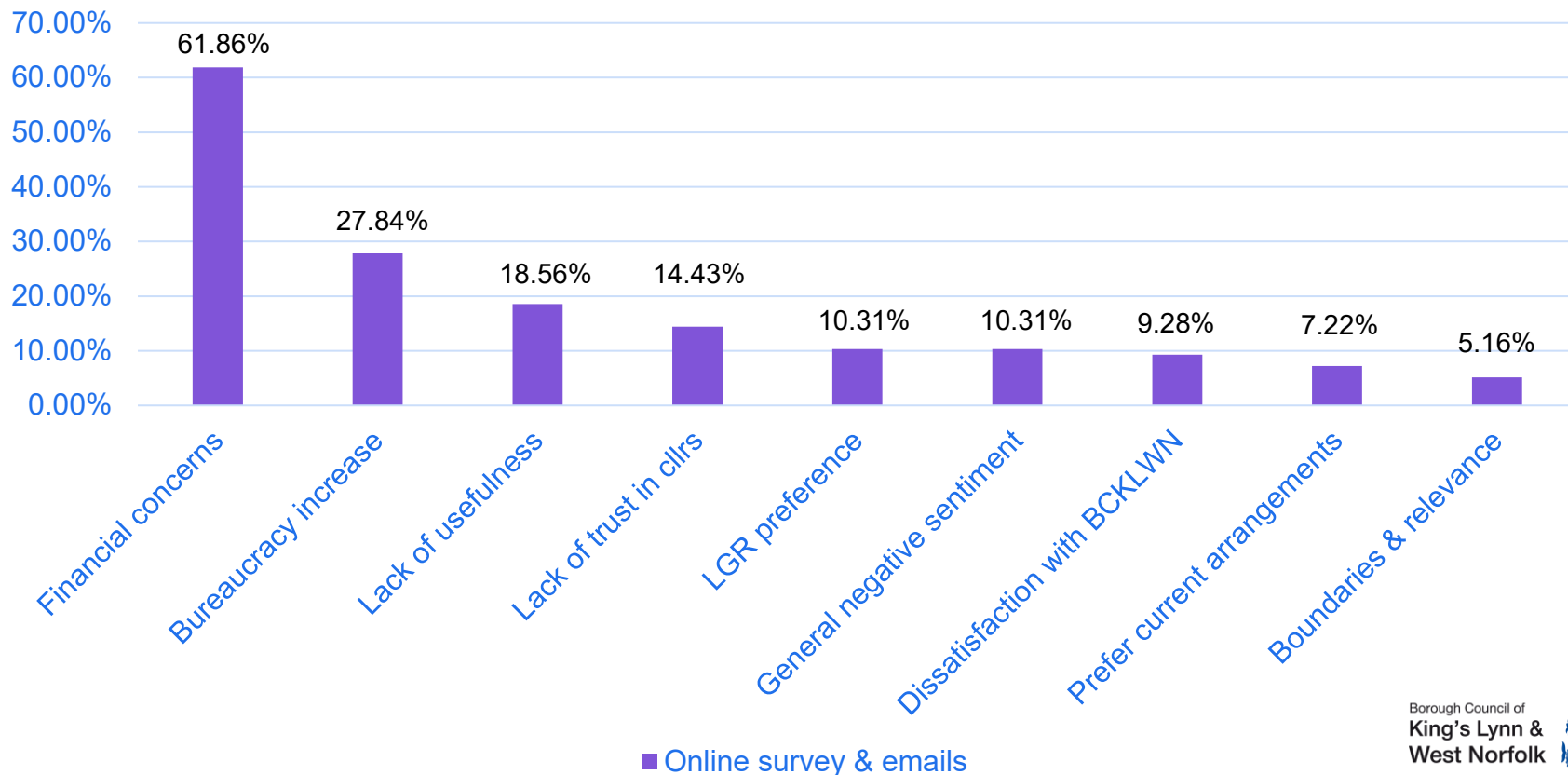
*'Setting up a central council is not good for democracy or local decisions for King's Lynn'*

*'LGR will take away any voice we have'*





# Most Frequent Reasons – Not In Favour



# Sentiments

## Financial concerns

*'Enough money is wasted'*

*'Council tax is already extortionate'*

*'Costing us more to maintain the status quo'*

*'Draining money from our pockets for no value'*

*'People struggle with rates as they are'*

*'Charging more money when most of us are living in poverty as is'*

## Bureaucracy increase

*'Another layer of people to pay for'*

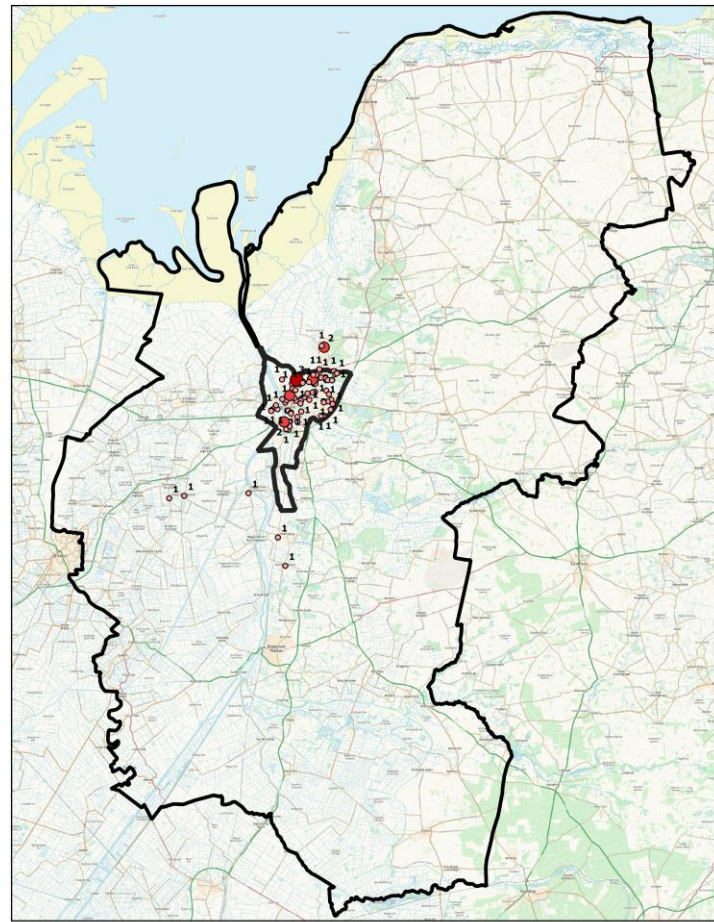
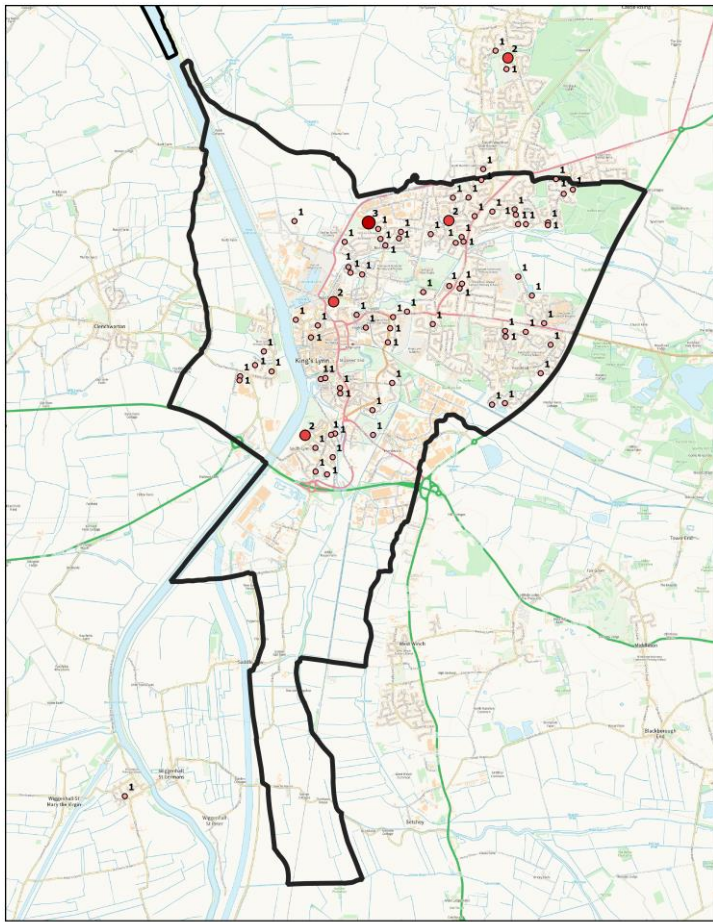
*'Unnecessary extra level'*

*'Another layer of inefficiency'*

*'I vote for simplification!'*

*'More bureaucracy, more expense we need less politics not more'*





# Another Option

- Boundaries & identity
  - West Lynn as its own parish
  - Confine a town/parish council to natural borders of King's Lynn town
- Alternative strategic visions
  - Seek city status for King's Lynn
  - King's Lynn is too large for a town council

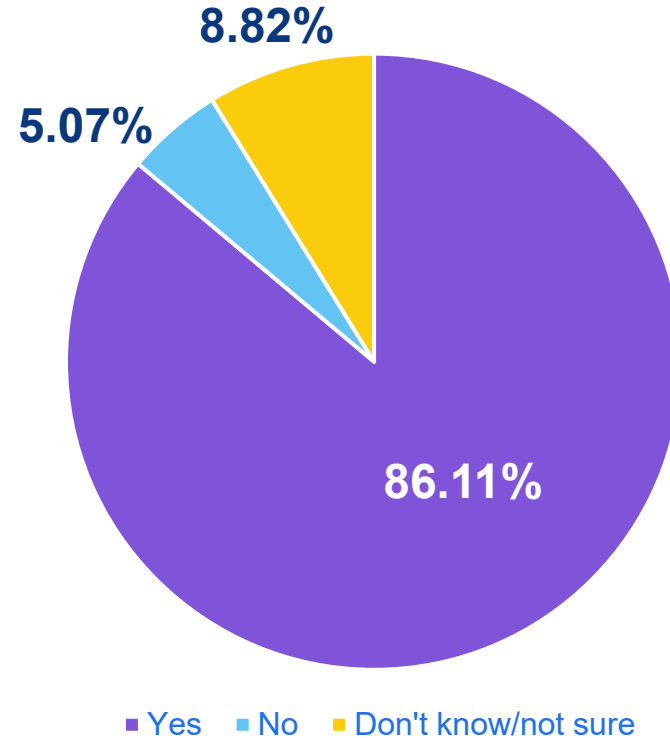


# Don't know / not sure

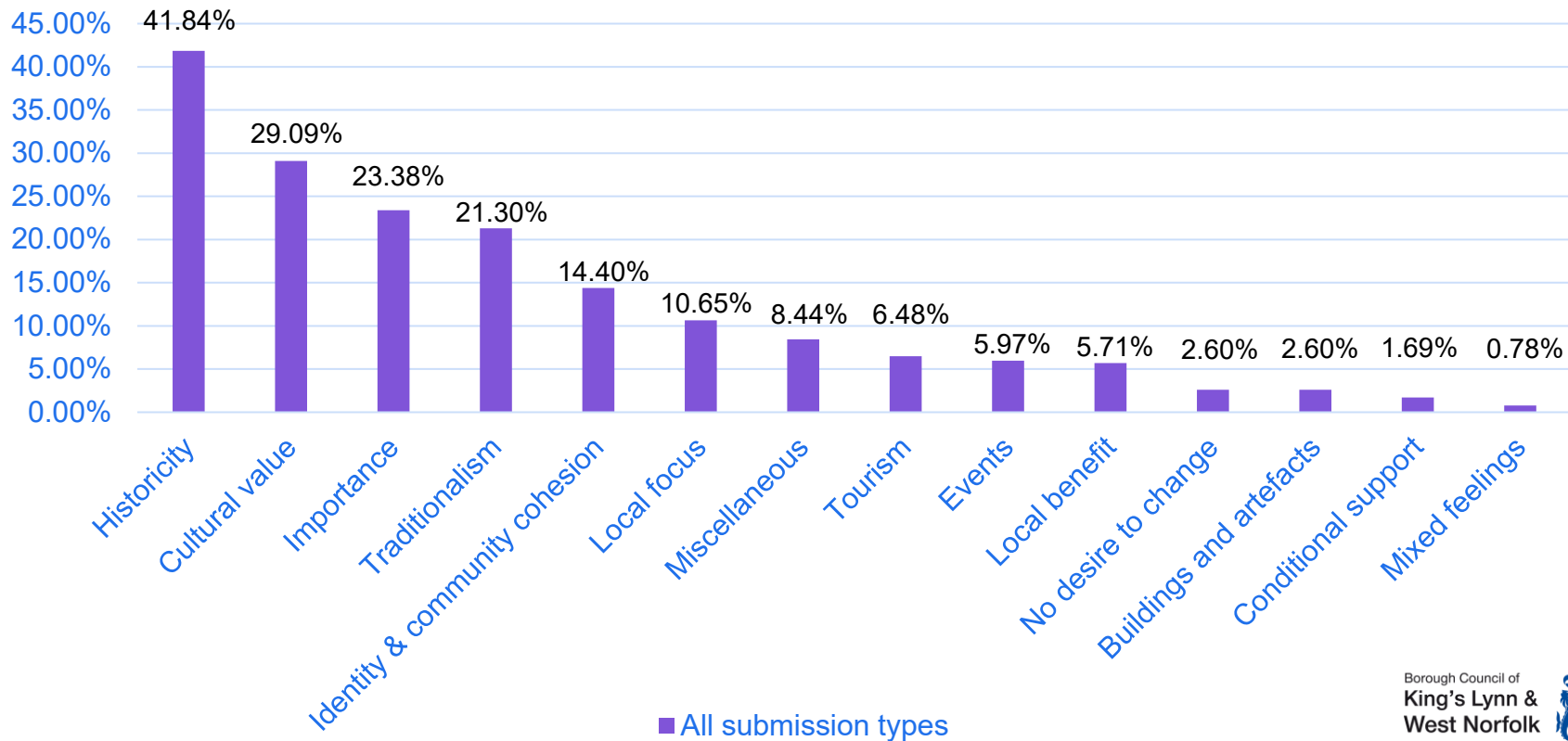
- Out of 20 responses:
  - 8 (40%) of respondents had financial concerns
  - 4 (20%) questioned the usefulness of a town/parish council
  - 3 (15%) said the consultation did not include enough information

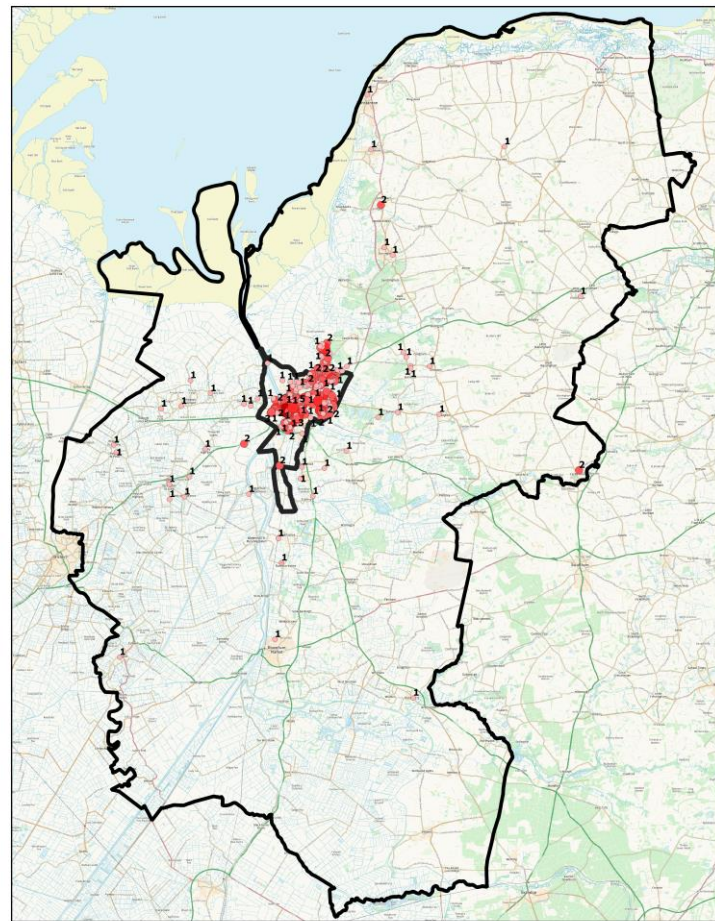
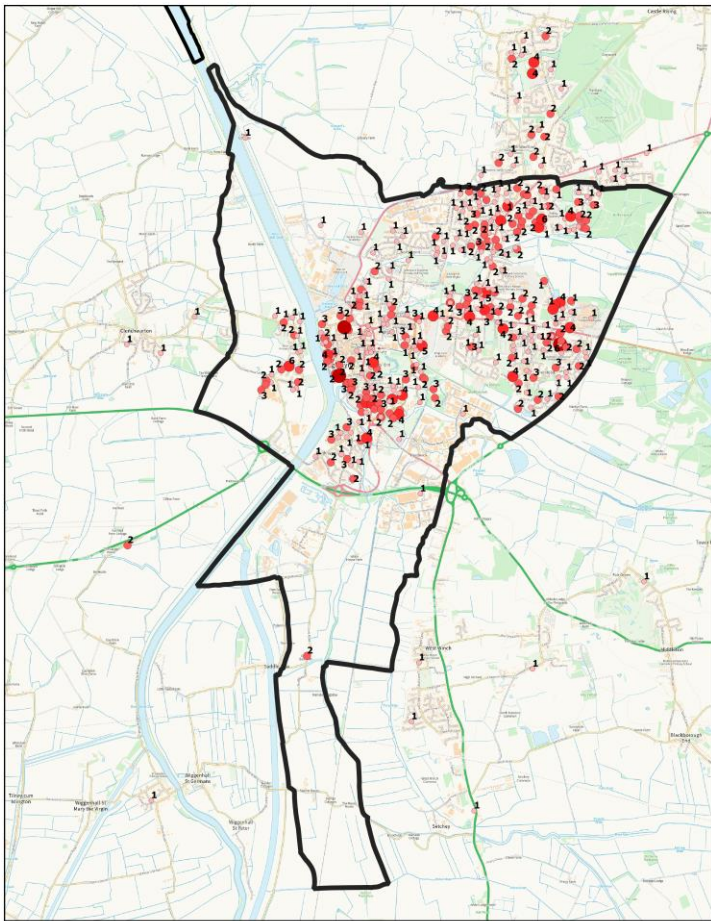


# Summary Results – Mayoral/Civic Heritage

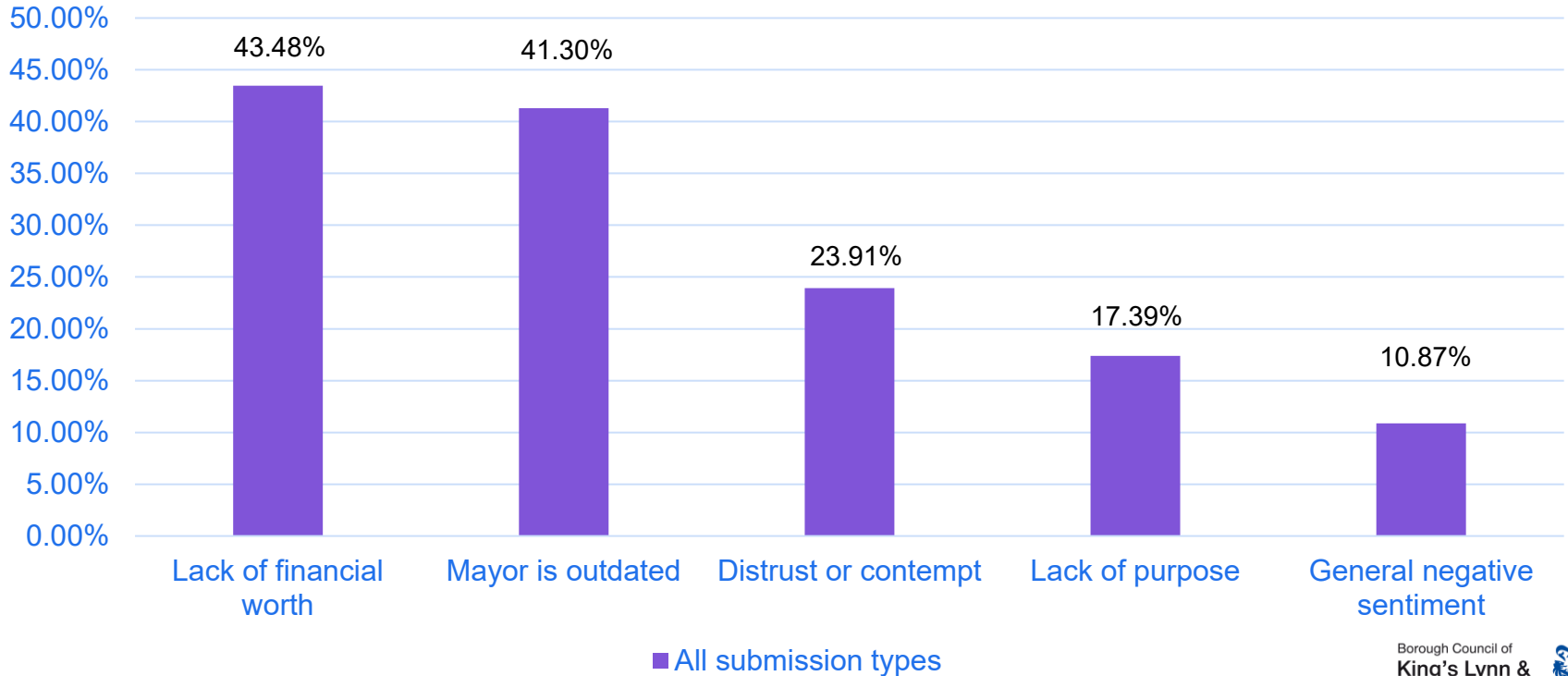


# Most Frequent Reasons – ‘Yes’





# Most Frequent Reasons – ‘No’



# Summary results – Alternatives to a Town/Parish Council

- Across submission types, **98** respondents had knowledge of alternatives – **10.83%**

## Ward Forums

King's Lynn Town Ward Forum

St. Margret's Ward Forum

## Community Associations

Reffley Community Association

## Other

King's Lynn Civic Society

Social Media Groups

King's Lynn Area Committee



# Timeframes

CGR	
23 March – 29 May 2026	Development of draft recommendations
29 June – 7 August 2026	Consultation 2
August/September 2026	Formulation of final recommendations
September/October 2026	Final recommendations and Reorganisation Order made
1 April 2027	Civil parish and parish council will come into existence
6 May 2027	Elections to new parish

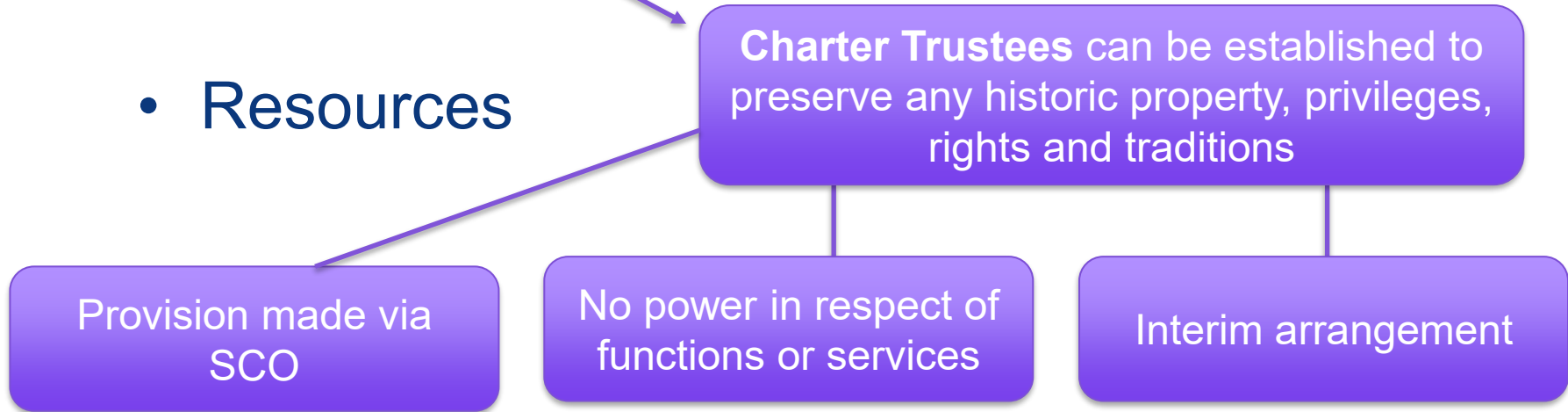
## SCO (and S24)

- Laid Autumn
- Made Jan 2027



# Key Risks

- Timeframe – concurrent LGR legislation
- Resources



# Next steps

- Electoral Arrangements Committee – Full Council
  - Options to consider
    - Progress the CGR – undertake the 2<sup>nd</sup> consultation
    - Charter Trustees
- Draft recommendations
- Cabinet Workshop
- KLAC briefing



# Questions/Comments

Borough Council of  
**King's Lynn &  
West Norfolk**

